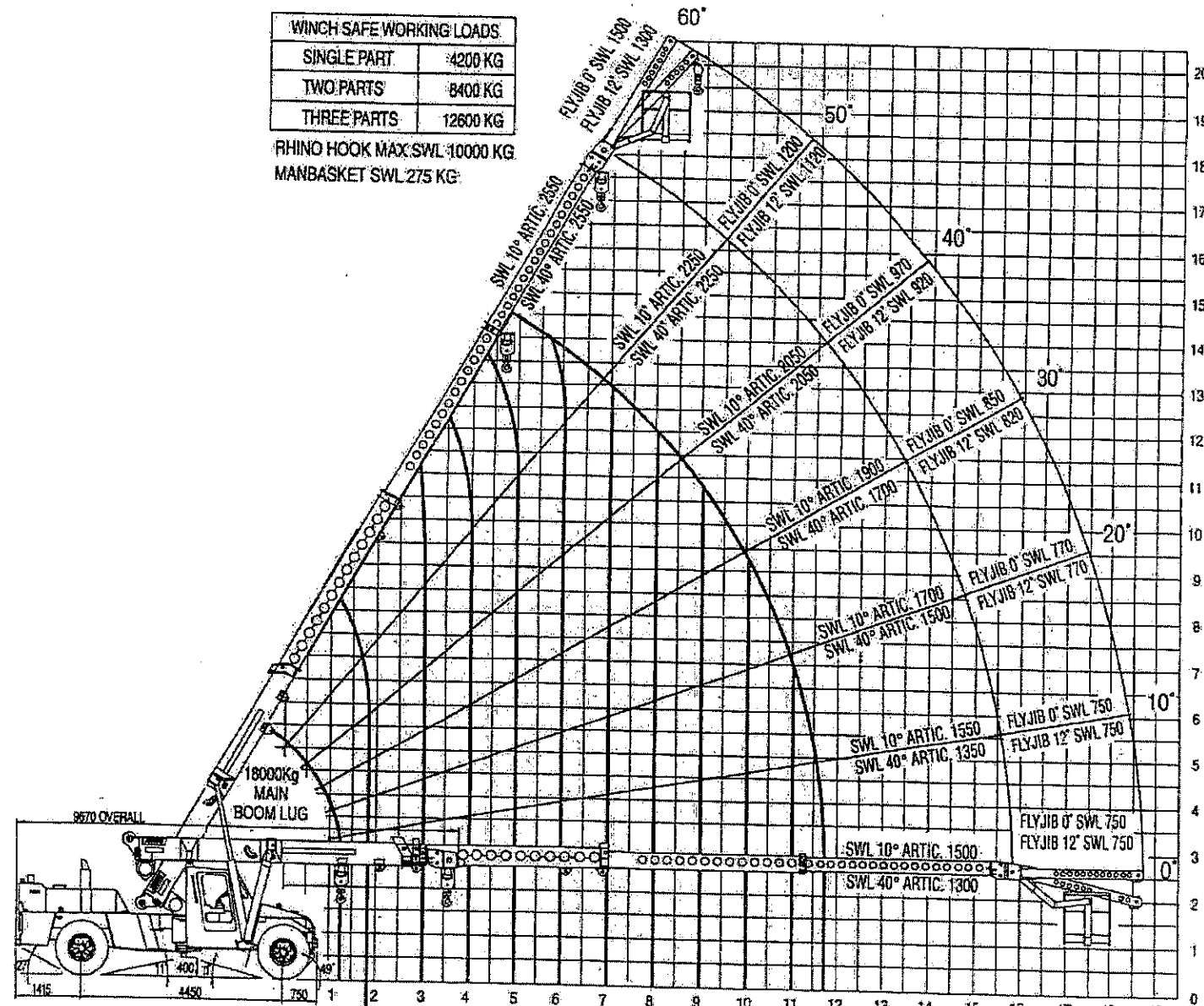
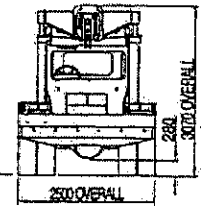


WINCH SAFE WORKING LOADS	
SINGLE PART	4200 KG
TWO PARTS	8400 KG
THREE PARTS	12600 KG

RHINO HOOK MAX SWL 10000 KG
MANBASKET SWL 275 KG



BOOM 1 LUGS SWL (KG) 10° ARTIC.	16000	11000	8000	6200	5000	4200	3500	3000	2650	2300	2100	WINCH SWL (KG) 10° ARTIC.
BOOM 1 LUGS SWL (KG) 40° ARTIC.	16000	10000	7250	5600	4500	3750	3150	2700	2350	2050	1850	WINCH SWL (KG) 40° ARTIC.

1.8 Metres

NOTE: 1. UNLESS OTHERWISE STATED ALL SWL'S REFER TO LIFTING ON THE WINCH. FOR LIFTING LUG CAPACITIES PLEASE REFER TO THE SPECIFIC LOADCHART.
2. THIS RADIUS CHART IS A SUMMARY OF LOADCHART 16C1204-, REFER TO THE CRANE'S LOADCHART BEFORE ATTEMPTING A LIFT.